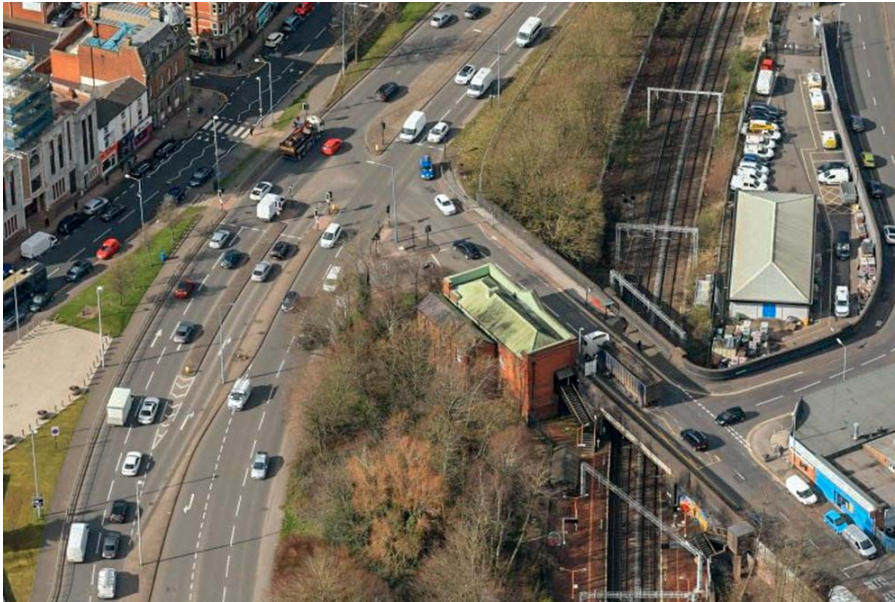


## Project to install new lifts at Smethwick Rolfe Street starts next week

4 years ago



Smethwick Rolfe Street station is getting new passenger lifts, with work to install them beginning next week.

The lifts are a £6.1million investment from Network Rail, part of the Government's 'Access for All' scheme.

Two new lifts will be put in place, providing step-free access to platforms one and two for the first time, assisting people with reduced mobility, families with prams and travellers with heavy luggage.

The project is due for completion in July 2022.

Leanne Brooks, sponsor for Network Rail, said: "We're really excited to be starting this work to provide lifts to platforms at Smethwick Rolfe Street, which will provide step-free access to trains for everyone in the local community for the first time.

"We are working closely with the station operator, West Midlands Railway and Sandwell Council to ensure our work brings as little disruption as possible to neighbours and passengers."

Brenda Lawrence, head of stations for West Midlands Railway, said: "Making sure the railway is accessible for everyone is a priority for us, and these improvements will make a real difference to our customers.

"Train services will continue to run as usual throughout the work, and we are already looking forward to unveiling these brand new facilities in 2022."

There will be no disruption to train services while work takes place, but the station will take on a different

appearance, with hoardings up around the construction site.

During the project, a lane on Tollhouse Way will need to be closed at certain times:

Monday 10 – Wednesday 12 January for preparation work

Saturday 30 April, Saturday 7 May and Saturday 14 May for a crane to lower the new lift shafts into position