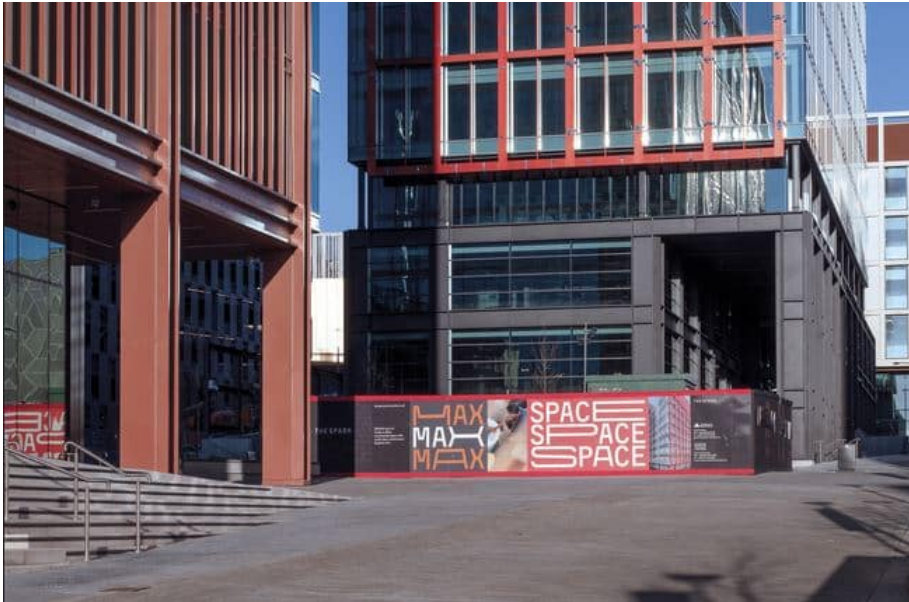


## Pareto FM partners with Womble Bond Dickinson

4 years ago



Transatlantic law firm, Womble Bond Dickinson, has appointed Pareto FM to provide integrated facilities management services across its UK estate.

The contract will see Pareto FM deliver all associated hard services including engineering, compliance, helpdesk, reporting and projects as well as partnering with Churchill services for the full suite of soft services. The contract will support all of the Womble Bond Dickinson UK locations including London, Bristol, Edinburgh, Leeds, Newcastle, Plymouth and Southampton.

One of the core deliverables of the contract is to deliver the ESG aspirations of Womble Bond Dickinson that includes reaching Net Carbon Zero by 2030. Pareto and Churchill will have a specific focus on reducing emissions via sensor technology, a reduction in the use of single use plastics and greater monitoring of waste. This also directly ties in to the ISO14001 agenda. This unique aspect of the contract will see the three parties truly partner together to achieve the strategic ambitions of the client organisation.

Martin Hall, Head of Facilities Management at Womble Bond Dickinson commented: "We led a well detailed and focused tender process to ensure we found a partner that could meet the needs of our organisation. In Pareto we found a company that had great focus on delivering a customer centric solution and understood the required standards to deliver to our organisation. We look forward to developing the partnership with Pareto across our UK offices."

Andrew Hulbert, Pareto FM Managing Director added: "We are absolutely privileged to be working alongside Womble Bond Dickinson following a robust tender process. The opportunity for Pareto to be

partnering with an organisation of the stature of Womble Bond Dickinson represents a great step forward for Pareto as we continue to increase our presence in the corporate services space. We look forward to forming a meaningful partnership and ultimately delivering most effective, productive, and progressive workspaces.”

*Image credit: Pareto FM*