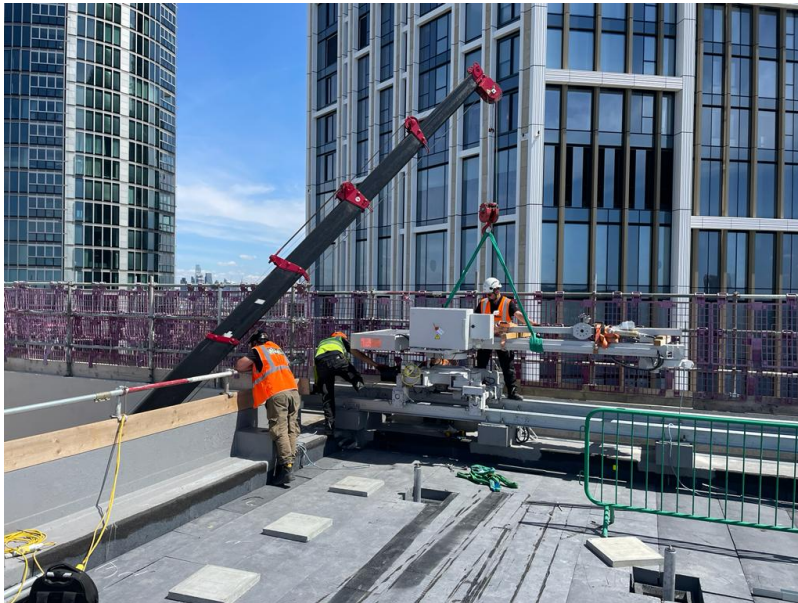


## Integral Cradles completes access equipment installation without the use of a tower crane.

3 years ago



**Integral Cradles** has installed another high quality building maintenance unit (BMU), this time for MACE on the project One Thames City N6. Without the use of the tower crane, Integral Cradles successfully completed the installation with the use of its own spider crane, which was assembled and disassembled using the project hoist.

The entire development of One Thames City comprises of twelve buildings, presenting 1,417 residences, retail outlets, eateries and over 120,000 sq. ft. of commercial space and 2.5 acres of open green space for the public within Linear Park.

Besides having unobstructed and unparalleled capital's views from well-conceptualised apartments, the residents will have access to world-class amenities and premium services at their fingertips.