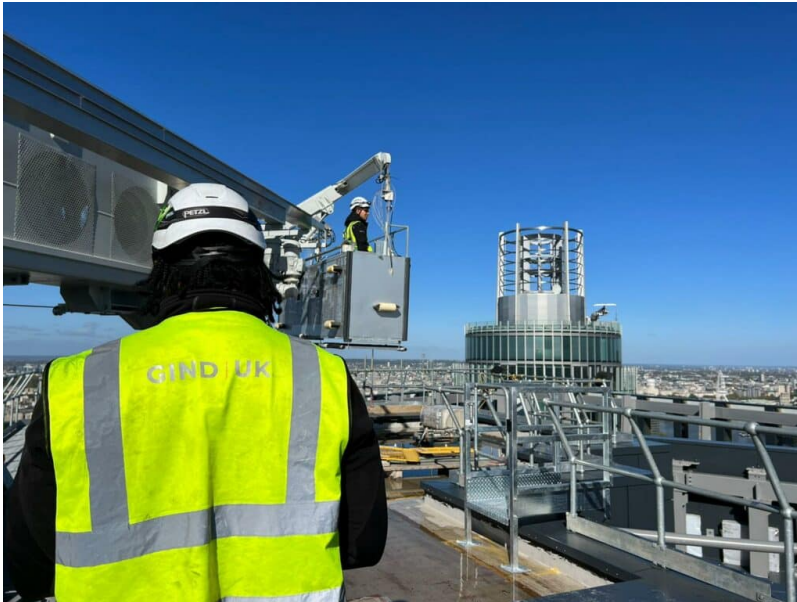


GIND UK undertakes vital testing at One Nine Elms

4 years ago



GIND UK, one of the UK's foremost façade access system maintenance providers, is on site at One Nine Elms in Vauxhall.

Its specialist engineers are undertaking beneficial use and testing works on this prestigious development in Vauxhall.

Multiplex is the main contractor for the design and build of a 56-storey tower, a separate 42-storey River Tower and a 173-room luxury hotel that will occupy the lower floors of the River Tower up to the 18th floor. The 42-storey River Tower is where GIND UK is currently positioned for its work.

The project will culminate in two landmark residential towers - the tallest residential towers in Europe - linked together with a glazed bridge that will provide access to City Tower facilities.

Working with partner company Integral Cradles, GIND UK delivers a whole-cycle solution from conception to completion, ensuring ongoing optimal performance.