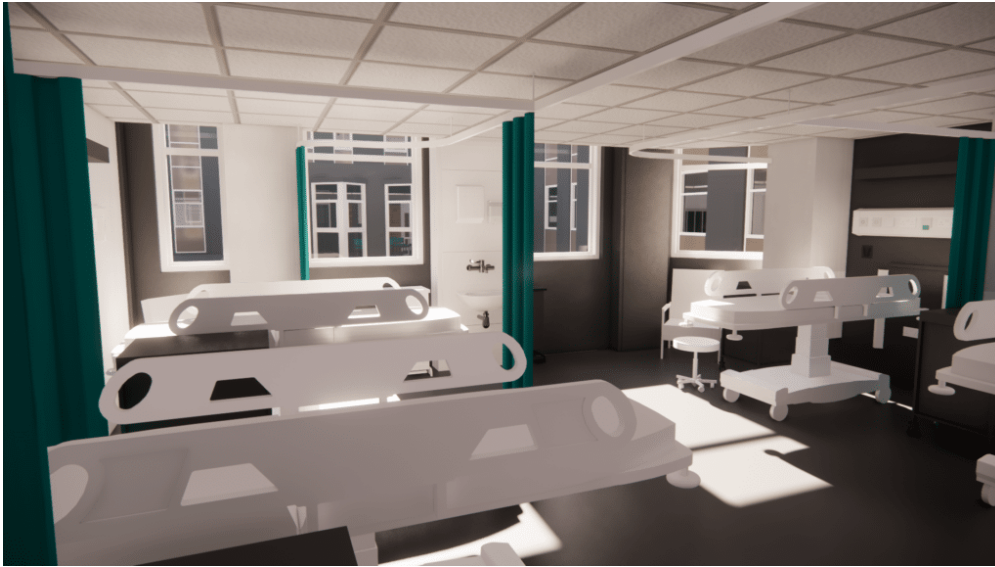


## Tilbury Douglas to lead the construction of the East Midlands Planned Care Centre

1 year ago



Tilbury Douglas, a leading UK building, infrastructure, engineering and fit-out business, has been appointed to lead the construction of the East Midlands Planned Care Centre (EMPCC) on behalf of University Hospitals of Leicester (UHL) NHS Trust.

The Planned Care Centre is one of the most significant capital developments at UHL in recent years and comprises the total refurbishment of the former Brandon mental health unit, a three-storey building on the Leicester General Hospital site that has stood empty for over 10 years.

The generous space, dating back to 1977, will be transformed into an exemplar planned care hub to help the Trust tackle waiting lists for planned procedures.

The project includes external fabric upgrades, with new wards, theatres, treatment rooms and support spaces planned internally. Partnering with Tilbury Douglas Engineering, the deliverables will include new plant rooms and boosted water tank installation, which, alongside a replacement roof and more than 700 replacement windows and doors, will contribute to the building's 'net zero carbon ready' strategy.

Simon Butler, Regional Building Managing Director – Midlands at Tilbury Douglas, commented: “We are proud to be selected to deliver this important scheme, which aims to provide additional capacity for elective procedures for Leicestershire. This should enable the further reduction of waiting lists within the region and allow for improved patient care.”