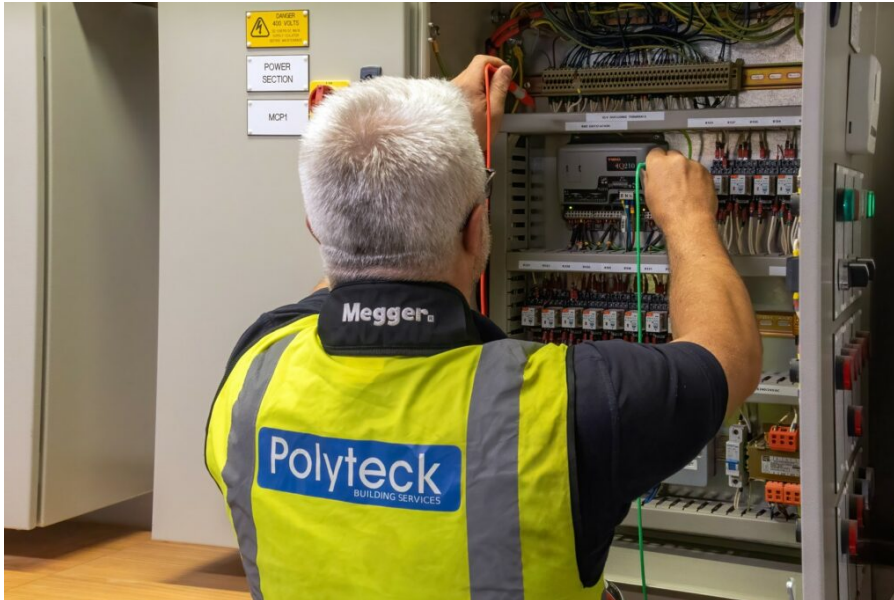


## Polyteck wins M&E contract for new Milton Keynes residential estate

11 months ago



[Polyteck](#) has been appointed the main provider of mechanical and electrical (M&E) services to the new Park Square apartments in Milton Keynes.

The one-year contract, will see Polyteck provide all aspects of planned preventative maintenance at the estate in Newport Pagnell, delivering full hard and soft services such as fire safety; heating, ventilation and air conditioning (HVAC); electrical; water; and roof safety systems.

Native Residential's Park Square will be completed by end of September for letting purposes, offering one-, two- and three-bedroom apartments to rent in the heart of Milton Keynes. The newly-built set of 329 residential apartments running across four blocks will have landscaped gardens, private dining rooms, an onsite gym, and co-working and lounge space, and will also host residential events.

John Polycarpou, chairman, Polyteck, said: "We're delighted to be taking on this new M&E contract for Milton Keynes' new Park Square apartments.

"Polyteck was appointed in July 2023 as the main M&E service provider for The Almere, also in Milton Keynes, and it was due to our high levels of service delivery that our bid for this latest contract stood out and was ultimately the forerunner in the process. We can't wait to get started and welcome Park Square residents to their new homes soon."

So far this year, Polyteck has been chosen as one of the 10 suppliers for Fusion21's £346m four-year Building Improvements Framework renewal; added to Procurement for Housing's (PfH) £675 million, four-year Planned Works Framework; and to Communities & Housing Investment Consortium's (CHIC) four-year kitchen and bathroom renewals framework.