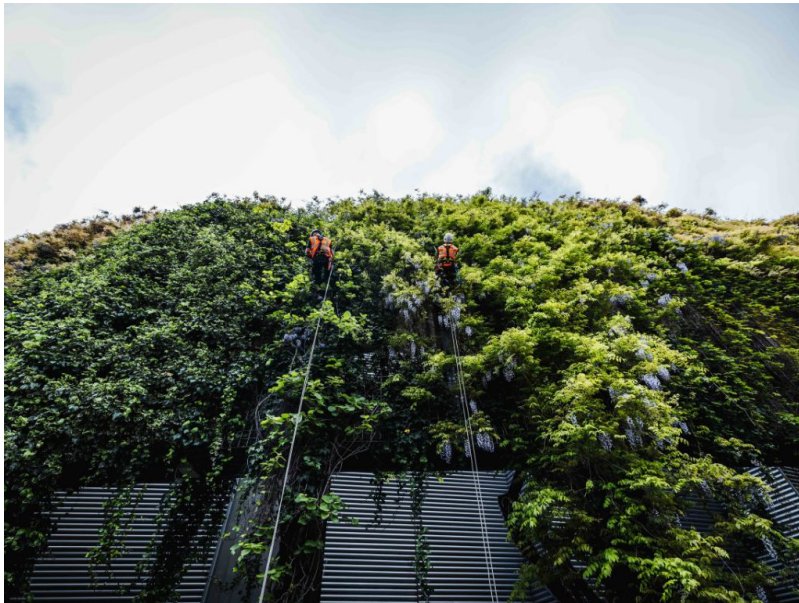


# Stadium Support Services Launches VertiCulture: Rope Access Maintenance for Living Walls

2 years ago



**Stadium Support Services** is proud to announce the launch of VertiCulture, a new division dedicated to providing rope access solutions for the maintenance of living walls.

Living walls bring green spaces to stadiums and office buildings while promoting biodiversity. Traditional maintenance methods have historically relied on diesel-powered platforms, contributing to increased carbon emissions. VertiCulture changes this by offering a greener approach through the use of rope access, reducing environmental impact.

Our IRATA-certified technicians, who are also trained horticulturists, use rope access to reach even the most challenging living wall areas. This allows us to deliver comprehensive maintenance solutions without the limitations of heavy machinery.

“Living walls are gaining momentum in the UK, and we’re committed to maintaining them in an environmentally friendly way. Our approach, combining expert horticultural care with rope access, ensures these ecosystems thrive while keeping disruption and costs low,” said Daniel Scott, Head of VertiCulture.

Key Benefits of VertiCulture:

- **Efficient Access**  
With smaller exclusion zones, less noise and no need for road closures, our maintenance work causes minimal disruption to tenants, clients and the public.
- **Minimal Disruption**

By eliminating the need for diesel-powered machines, rope access helps us lower emissions, providing a more eco-friendly solution.

- Environmentally Friendly

Without heavy equipment or road closures, we can mobilise quickly and efficiently, ensuring timely maintenance with minimal environmental impact.

- Expert Care

Our technicians are not only trained in rope access but are also horticultural experts, ensuring the long-term health of living walls and extending the lifespan of these installations.

- Cost-Effective

Avoiding the use of expensive access equipment and bypassing the need for road closures translates to significant cost savings for our clients.