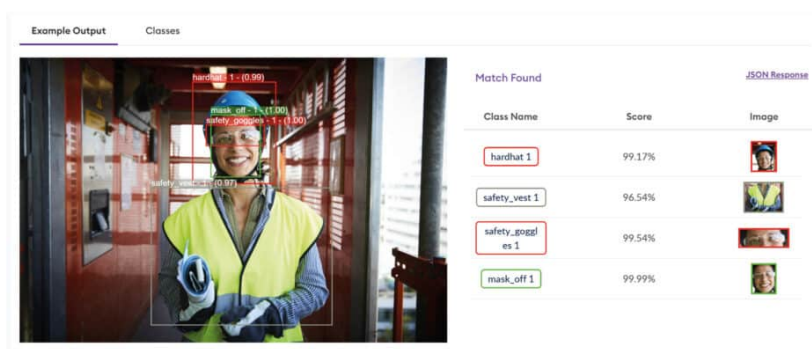


Galliford Try partners with Chooch for AI driven security

9 months ago



Galliford Try's Asset Intelligence business has partnered with leader in California-based Vision AI technology, Chooch, to integrate into its offering next-generation AI that will enhance security and protect assets, workers, and surrounding communities, while improving operational efficiency.

Galliford Try Asset Intelligence will use Chooch's technology to enable real-time, autonomous site monitoring, identifying potential safety hazards and providing rapid alerts to emerging risks, delivering intelligent insights that have the potential to be deployed across physical and electronic security, as well as advanced fire detection.

This includes:

- Human and asset protection: real-time detection, prediction and review services monitoring and data analysis, enhancing resource efficiency and driving smarter operational decisions.
- Workplace safety: automated detection of safety hazards, reducing accidents and improving response times to incidents.
- Fire Detection: early, accurate fire detection to protect valuable assets, workers, and the environment.

"We aspire to lead the shift to digital transformation in security and fire disciplines, pursuing a technology driven approach and so we are delighted to partner with Chooch to bring AI-driven security solutions to our clients," said Uzair Osman, Managing Director of Galliford Try Asset Intelligence.

"Chooch's technology adapts to the diverse needs of our projects and enhancing our comprehensive offering and goals of bringing quality, resilience, value, innovation and new standards in physical,

electronic and fire security environments.”

Anubhav Saxena, CEO of Chooch added: “Chooch combines Generative AI and computer vision to deliver real-time, intelligent insights from visual data. By making cameras smarter and more efficient, Chooch helps optimise resource use, enhance workplace safety, and enable advanced fire detection—driving more sustainable and responsible operations.

“Galliford Try’s commitment to evolving with cutting-edge technology is evident, and we are excited to contribute to their mission for innovation.”