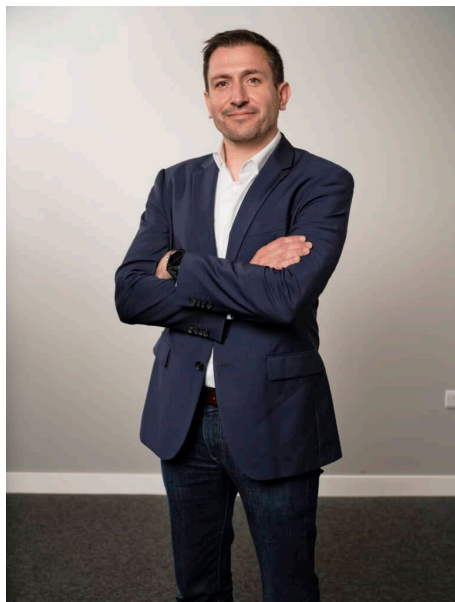


Social housing providers urged to opt for clean heat

2 weeks ago



[Baxi](#) is encouraging social housing providers to ensure they have robust clean heat strategies in place for both new build and refurbishment projects following funding announcements in the Spring Statement.

The call follows the government's allocation of £2 billion to support the development of 18,000 new affordable homes, half of which is allocated for social housing. This funding for new build homes sits alongside the Warm Homes: Social Housing Fund in place to retrofit existing social housing and improve energy efficiency. Rob Pearse, Residential Business Director at Baxi, said: "The £2 billion set aside for social housing in the Spring Statement must be used with sustainability in mind, which includes the long-term comfort and financial security of tenants as well as electrified heating. This can be achieved by working closely with manufacturers who have expertise in the sustainable heating of social housing and a raft of solutions able to match almost any requirements.

"Delivering clean heat in social housing sector can be challenging, and we intend to support providers from the earliest steps of their net zero journey. It is important to identify the system that delivers the best efficiency, cost and environmental results for the building and occupants. Working closely with experts and the wider supply chain can provide the expertise and solutions to do this successfully for both new build and retrofit."

Air source heat pumps (ASHPs) are a key route to clean heat for both new build and retrofit social housing projects, though design challenges for retrofit and skills shortages for installers can be a barrier to social housing providers. To assist the sector with implementation, Baxi has developed a broad portfolio of heat pump solutions suitable for new build and retrofit, along with extensive training, commissioning services and customer support.

This includes new prefabricated pod options for new build and retrofit that bring the ASHP system into a pre-assembled unit, manufactured offsite by Baxi Packaged Solutions (BPS). Using Modern Methods of Construction (MMC) to deliver a more sustainable solution makes the installation significantly faster and simpler and removes the need for major modifications inside the home. This in turn makes low-carbon heating and hot water more accessible in social housing.

For larger developments and multiple occupancy buildings, Baxi's expert full-service heat network team offer support with design and implementation of end-to-end solutions, including social housing developments. Where zoning policy mandates that heat networks must connect to a larger scheme, consultation with experts, such as those at Baxi, can support a smoother integration with the wider network.

Rob said. "Achieving decarbonisation requires a combination of bespoke plans and expertise in heating and hot water solutions.

"At Baxi, we have the range of solutions to deliver on energy efficiency and net zero targets, along with the vital experience to support social housing providers in delivering clean heat across new build and retrofit. With the funding discussed in the Spring Statement, we are encouraging all social housing providers to stay ahead of the curve by exploring the solutions available for their projects."