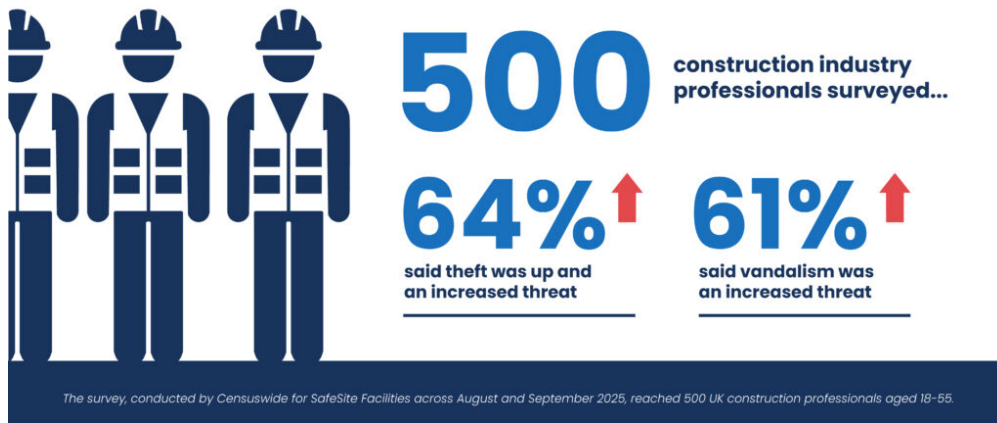


# Construction industry reports escalating site theft and vandalism

6 months ago



Theft and vandalism are growing problems in the construction sector, with almost two-thirds of industry professionals saying they are more of a threat than five years ago.

That is according to a survey of 500 construction industry professionals in which 64% said theft was on the up and 61% said vandalism was an increased threat. In addition, 56% of management said they were worried about the issue.

[SafeSite Facilities](#), which commissioned the survey and delivers site safety products to construction companies nationwide, said the feelings of insecurity reflected deeper concerns in society about economic challenges.

Dr Lowellyne James, HSEQ manager at SafeSite Facilities, said: "During challenging economic times, feelings of insecurity around theft and vandalism reflect deeper societal concerns and financial uncertainty.

"Construction companies need to create workplaces where people feel safe, supported and empowered, physically, emotionally and psychologically.

"Part of tackling the perception of theft and vandalism is building trust, encouraging open dialogue and ensuring swift action when concerns are raised.

"When employees feel secure, they thrive and that's the foundation of a resilient, productive workforce."

The survey showed at their current site:

- 56% said management were concerned about theft, rising to 62% at residential construction sites.

- 51% said management were concerned about vandalism, rising to 55% in commercial construction and 57% in infrastructure and heavy civil construction.

The survey found 64% said theft was more of a problem compared to five years ago, rising to 88% for more experienced workers and 70% in commercial construction and just 12% said theft was less of a problem.

Meanwhile 61% said vandalism was more of a problem than five years ago, rising to 75% in institutional construction and only 14% said vandalism was less of a problem.

The results revealed construction workers thought the following had increased in frequency over the last five years.

- Theft 39.5% (up to 48% in commercial construction)
- Trespassing 39% (up to 50% in industrial construction)
- Vandalism 35% (up to 43% in institutional construction)
- Squatting 34% (up to 40% in institutional construction)
- Graffiti 27.5% (up to 35% in infrastructure and heavy civil construction)

Paul Goossens, operations director at SafeSite Facilities, said: “Construction sites are especially vulnerable to theft and vandalism during winter and periods of economic uncertainty.

“Longer nights, reduced visibility and fewer workers on site create ideal conditions for opportunistic crime.

“We recommend a layered approach to security, starting with robust physical barriers like steel fencing or concrete blocks to deter unauthorised access.

“Surveillance systems, including CCTV and motion-triggered alarms, provide 24/7 monitoring and rapid response.

“With rising material costs and project delays, tailored site protection is essential to safeguard assets, maintain timelines and reduce insurance risks.”

SafeSite Facilities is a leader in construction, event site safety and security.

For more information, visit: <https://www.safesitefacilities.co.uk>